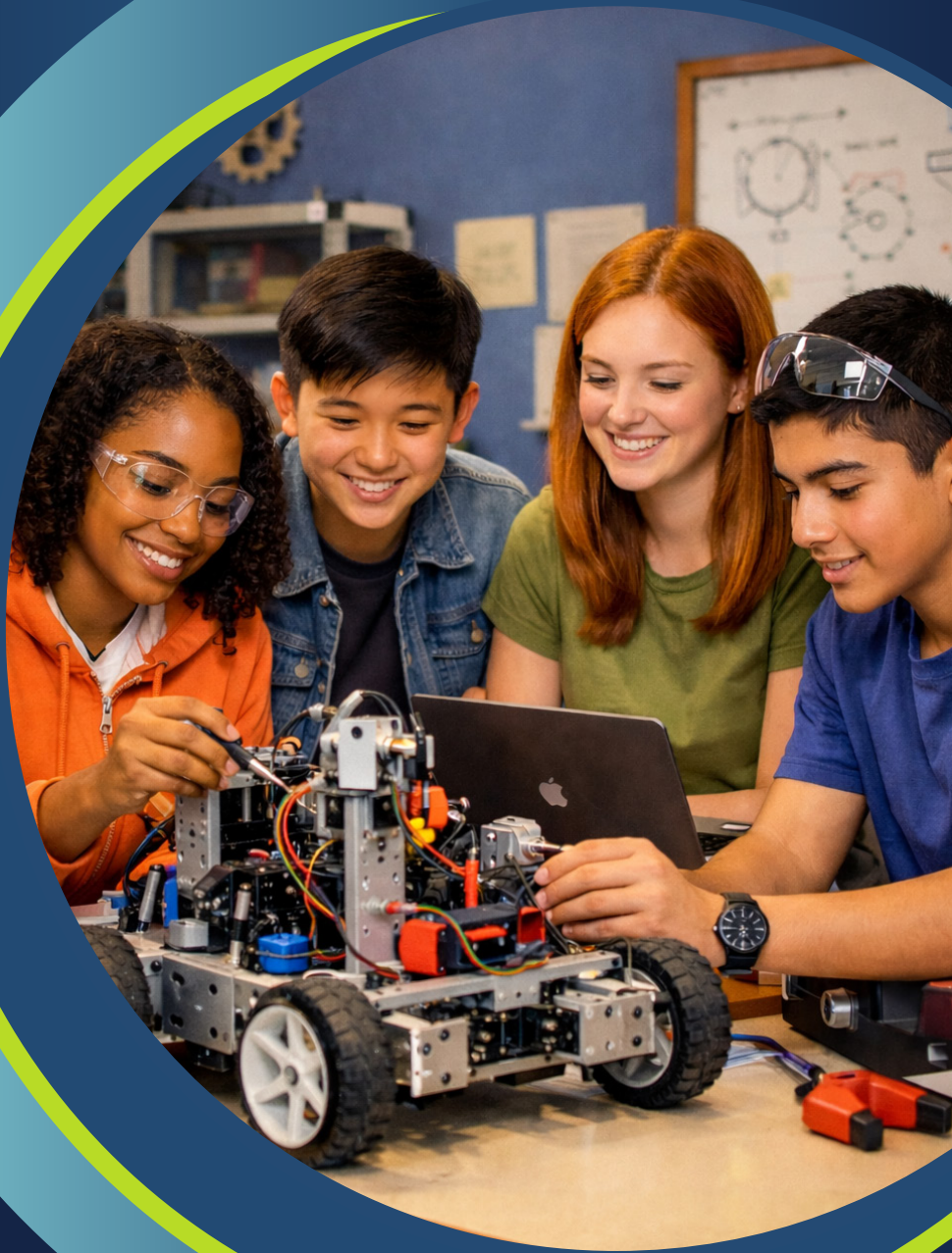
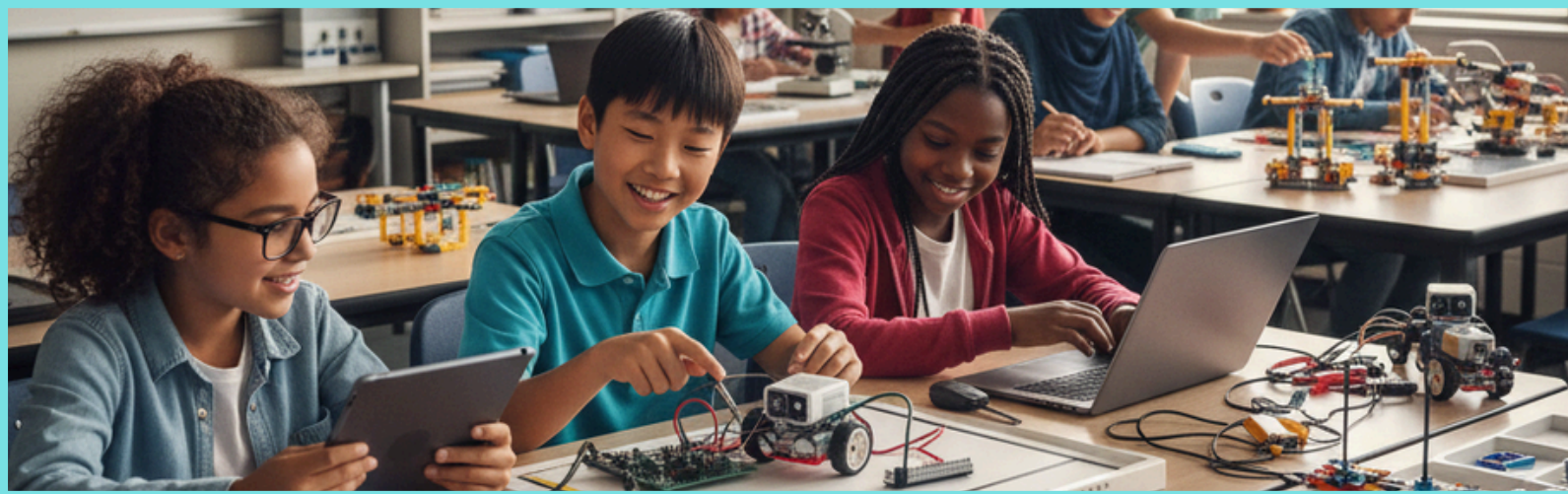


**Study Group**



**2025**  
**Annual**  
**Report**



## A LETTER FROM OUR CEO

I am honored to share how The Study Group has advanced its mission in 2025.

This year, we worked to advance assessment innovation, prioritizing insight and improvement over ranking. We championed robust public infrastructure for AI for learning and workforce. We honored the legacy of our friend and founding executive committee member, Robert J. Mislavy, helping to ensure that his values continue to guide future generations. We broadened the conversation about AI's role in human development and work by recognizing human variation as essential to any vision of meaningful innovation.

These efforts share a common purpose: **amplifying human potential.**

Our work promotes human dignity, helping to ensure that innovation is grounded in evidence and shaped by the lived experience of students, educators, and communities.

As we prepare for 2026, we thank you for helping us build an education ecosystem where every learner flourishes. Reach out if you'd like to pursue projects together.

Eric M. Tucker and The Study Group

## 2025 BY THE NUMBERS

The Study Group exists to advance the best of artificial intelligence, assessment, and data practice, technology, and policy; uncover future design needs and opportunities for educational systems; and generate recommendations to better meet the needs of students, families, and educators. Here's a look at 2025 by the numbers:



**2 MM+**  
**REACHED**

**22,500+**  
**TOOK ACTION**

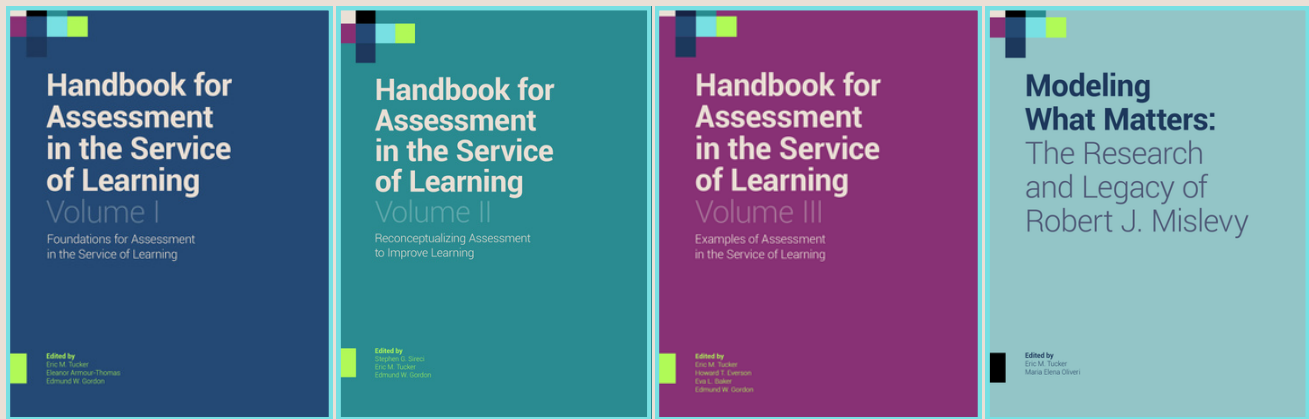




## ACCELERATING RESEARCH TRANSLATION

### Turning rigorous research into real-world impact.

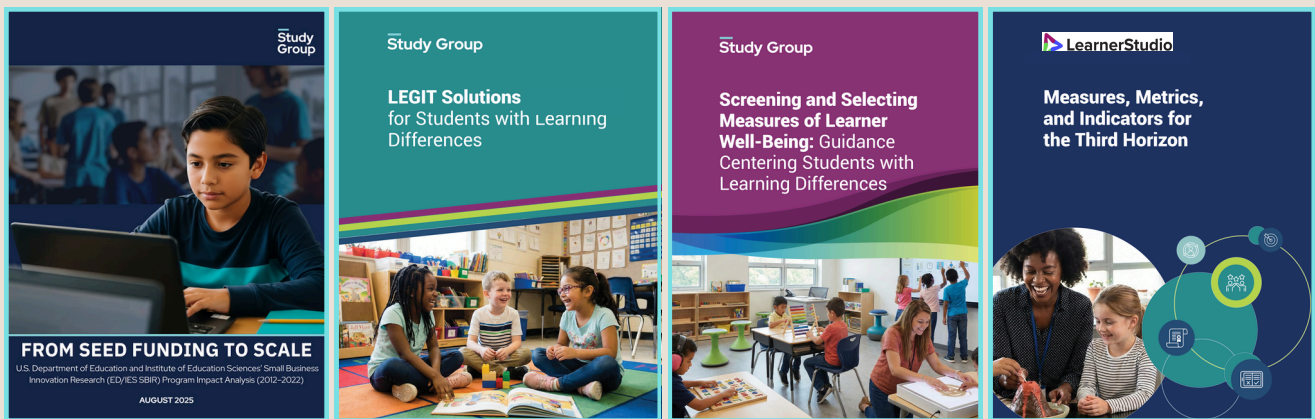
We ensure that scientific discovery is transformed into actionable insights to inform practice, technology, and policy. Grounded in evidence and shaped by the lived experience of learners, educators, workers, and families, we inform the next generation of solutions.



## APPLIED RESEARCH

### Generating evidence to inform the future of learning and work.

We mobilize rigorous inquiry at the speed of innovation. In an era of rapid technological acceleration, we support partners and conduct agile, applied research on industrial policy, frontier technologies, testing and evaluation, and learning and workforce solutions.

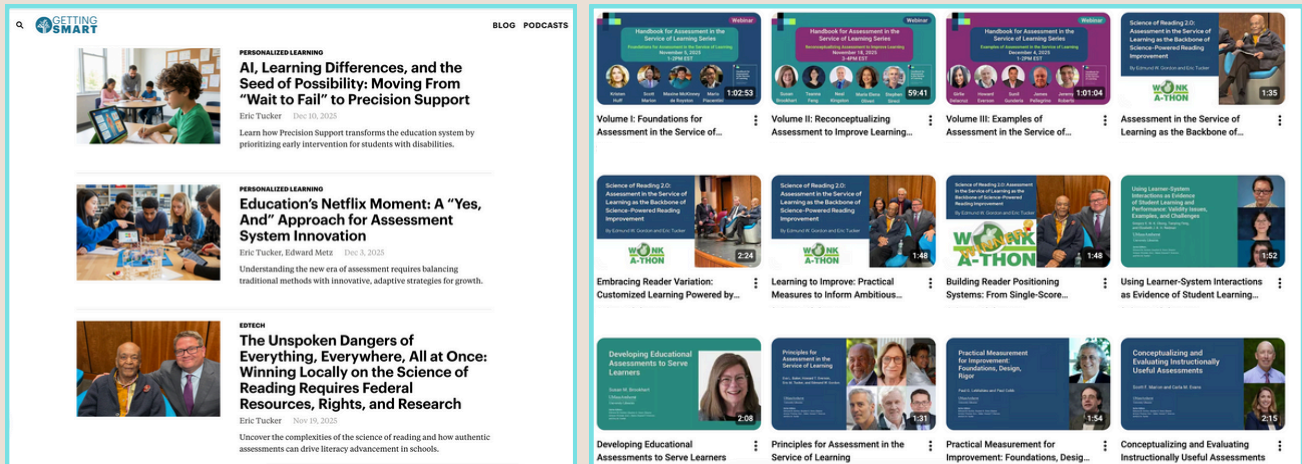




## COMMUNICATION & ENGAGEMENT

### Building shared understanding to drive collective action.

We build the uncommon coalitions necessary for change. By convening stakeholders and elevating critical narratives, we turn evidence into momentum for learning and workforce systems.



## POLICY & PRACTICE

### Aligning policies, infrastructures, and innovation for lasting impact.

We align infrastructure with innovation. Our work translates high-level policy ambition into the durable systems required for effectiveness, accountability, and national competitiveness.



## SHAPING THE CONVERSATION

Leading publications and channels extended the reach of our work.



THOMAS B.  
FORDHAM  
INSTITUTE  
ADVANCING EDUCATIONAL EXCELLENCE



The74



*Save NSF*



EDUCATING ALL  
LEARNERS  
EDUCATINGALLLEARNERS.ORG



WILMERHALE 



Sustaining  
Education  
Research





## OUR STRATEGIC INITIATIVES

### Advancing **AI,** **Measurement** and **Assessment** **System Innovation**

We strengthen best practices in assessment, measurement, AI, and data to ensure innovations in practice, technology, and policy better serve students, workers, educators, and society.

### **Innovation@Work**

*Public Infrastructure for AI  
for Education and Workforce*

We promote efforts to establish a robust public infrastructure for AI for education and workforce applications, including R&D, testing and evaluation, and data and compute.

### **Learners for Life**

*The Life and Legacy of  
Edmund W. Gordon*

We help to elevate and preserve Edmund W. Gordon's legacy by documenting his professional contributions, life story, and the impact of his relationships and communities.

### **Amplifying Human Potential**

We aim to shape AI's role in enhancing human potential by championing human and learner variation as a critical lens for AI innovation.





**Study  
Group**  
study-group.org